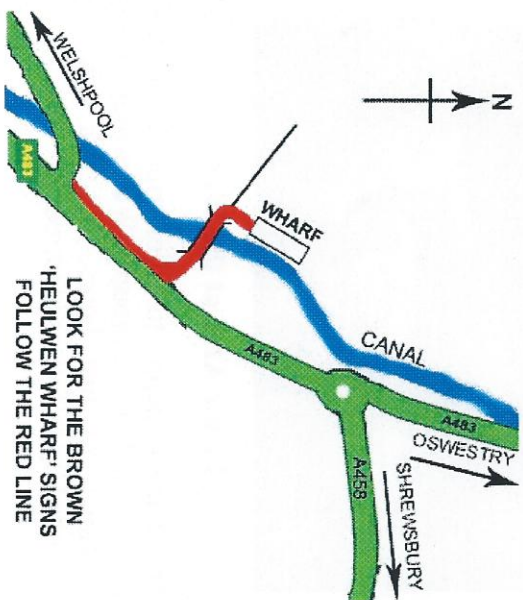


HOW TO FIND US



THE HEULWEN TRUST

Charity No 1010813

www.heulwentrust.co.uk

Booking Secretary

Jenny Maddox

Tel 01938 554810

Chairman

David Corfield

Tel 07885 484228

Secretary & Treasurer

Jenny Maddox

Tel 01938 554810

In June 2009 the Trust took delivery of a new boat, Heulwen III Silver Lady, replacing the ageing Heulwen I. Constructed locally at Maesbury Marine services, Heulwen III is a state-of-the-art vessel specially designed to carry elderly and/or disabled people.

Please note: For last minute cancellations, delays or other problems, and Jenny Maddox is not available, please telephone the boat crew direct on 07974 573498 or 07885 484228



'The Two Brians' Boat Helmsmen



THE HEULWEN
TRUST
WELSHPOOL



**Helmman
Brian Bebb
Demonstrates
Wheelchair
Access**
(Picture Posed)

Heulwen is the Welsh word for *sunshine*, so is an appropriate name for a Trust dedicated to bringing enjoyment to those with special needs.

The Trust was formed in 1985, and provides free trips on the Montgomery Canal. To date, some 60,000 people have enjoyed these trips.



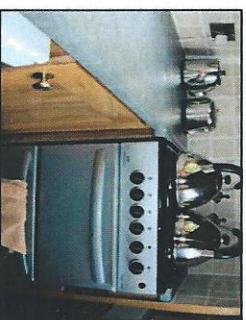
**Control Tent At
The Country &
Western Festival**

It costs many thousands of pounds per year to run the two boats, including wages and maintenance. Our main fund-raising event is the annual Country & Western Music Festival, held the third Sunday each July on Powis Castle Showground, Welshpool.

We also rely on donations from organisations and individuals, as well as legacies. These may be sent to: Jenny Maddox, 10 Bryn Glas, Welshpool, Powys, SY21 7TL.

The boats are available to many groups, including those attending Day Centres, special-needs schools or living in residential homes. Because they are specially adapted for people with mobility problems each vessel can accommodate up to twelve people. We have taken delivery of a new boat, Heulwen III 'Silver Lady' which was built locally.

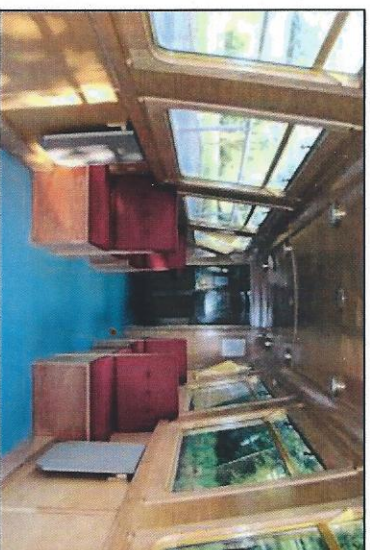
There is easy access for wheelchair users. Both boats are equipped with a hydraulic lift. Each carries a first-aid kit, and is manned by trained crew. The safety of our visitors is paramount.



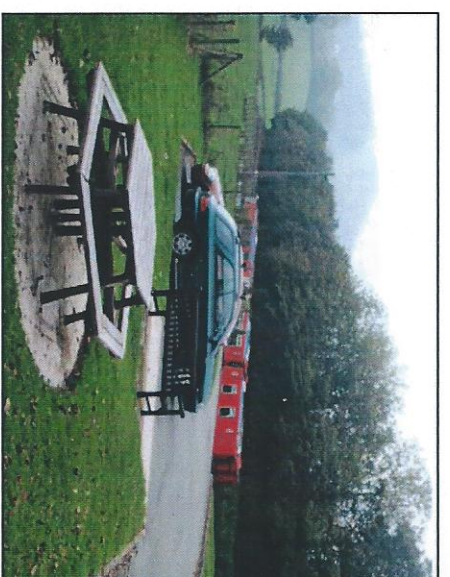
There are ample catering facilities on-board, and carers can use the well-equipped kitchens to prepare a hot meal.

Alternatively you may bring a picnic to eat on the boats or, if you wish, use the picnic area adjacent to the wharf.

Toilets are on board for both carers and their charges



Interior of Heulwen III, showing flexible space for wheelchairs



Picnic Area at the Wharf

The Trust is happy to tailor trips to suit the needs of individual groups. We recommend a minimum of two hours, but this can be extended up to five as required.

The beautiful Montgomeryshire countryside unfolds as the boats travel slowly along the canal. There is lots of wildlife to see, including water fowl, swans, moorhens, herons, fish, mammals and insects.

The boats are available Monday-Friday for one booking each day between 9.30am and 4.30pm.

Interior of Heulwen II



To book contact
Jenny Maddox,
10 Bryn Glas,
Welshpool,
Powys,
SY21 7TL.

Tel :
01938
554810